

## **Must read this before installation**

### **Important instructions about your CISS system Epson 1400**

1. If your printer is brand new you must first install the original cartridges that came with your printer. The reason for this is because the printer needs to initialize with the original cartridges. CISS cannot initialize a new printer and the printer will show an error-saying cartridge cannot be recognized.
2. After you remove original cartridges you can install CISS.
3. Please don't wait until your original cartridges are empty before installing CISS. In case CISS has a problem you still have your original cartridges to fall back on.
4. After installing CISS if there is something wrong or there is a printer error coming up- Please e-mail Devin at [cbiss@superpremiulectronics.com](mailto:cbiss@superpremiulectronics.com)
5. Make sure to describe your printer error in detail and what you have tried so far to fix it. I will help you fix it or send replacement parts or a replacement unit.
6. If your ciss is equipped with auto reset chips ink levels only reset when ink is down to last 5%-10%. Auto reset chips will not reset if ink is at 80% or 50% and so on. If the ink levels is down to the last 5% and auto reset chips have not reset, then unplug your printer from power and wait 5-10 minutes, then plug it back in- ink should read 100% again.

Thank you,

### **Warning!**

**Please keep ink tanks on the same level as the printer. (on the same desk bottom of printer = bottom of ink tanks)**

**DO NOT put ink tanks above the printer or on top of the printer.**

**Air Filters must be installed on to ink reservoirs outside the printer. Do not put air filters inside the printer**

**Do not mix ink from different manufactures. Mixing ink may cause ink to clog in the ciss or even worse in your printer.**

[www.SuperPremiumElectronics.com](http://www.SuperPremiumElectronics.com)

## CIS for Epson 1400 Install Instructions

Thank you for purchasing Continuous Ink Supply System. We appreciate your support and will try our best to make your experience with our products a pleasant one. Printing has been a different experience ever since you installed Continuous Ink Supply system on your own printer. Just imagining being able to print without regard to the ink level in those expensive little cartridges.

Please take your time installing Continuous Ink Supply system. Do not remove your old cartridge until you have the CIS system primed and ready to install (to prevent the drying of heads). In addition, make sure you are getting perfect nozzle checks before installing the CIS system. The CISS system won't be able to work properly if the nozzles are previously clogged.

Most people get a perfect nozzle check the first time after installing the Continuous Ink Supply system; others may need to run two or three cleaning cycles or let the printer sit for a while before they get the perfect results.

### 1. General Guide:

- 1) Components
2. CIS system 1 set
3. Air filters 6 pcs
4. Refill syringe 1 pc
- 5 Opening box inspection
- 6 Check to see if any tubes have been separated from the CISS

### 2. Printer testing:

- 1) Check whether the printer is in normal condition, like mechanical status, lubrication status etc.
- 2) Print testing lines to ensure the printing head is good condition.
- 3) Print pictures to see whether the printing image is ok.



# Installation Procedure

## Step 1: Preparation



Put the CISS on the right side of the printer and place all the tubes at correct position.



Pull out the small rubber plug from the air hole as picture shown above.  
For all 6 colors

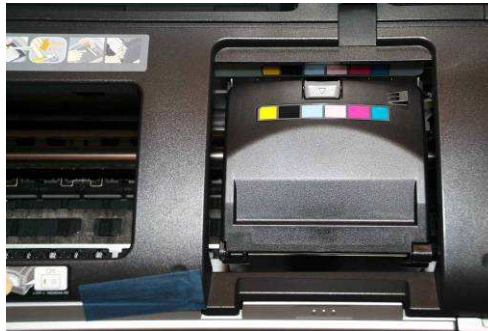


Place 6pcs of air filters into air holes,  
For all 6 colors.  
With the fat side down.

## Step 2: Take out the original cartridges



Push the button for changing cartridges



Move the cartridge to the place of changing position



Use a screwdriver to to remove Printhead cover.



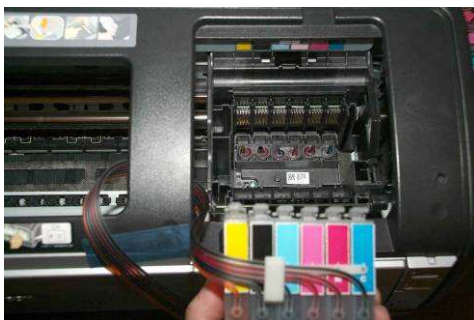
Remove Cartridges



Move print head to the left



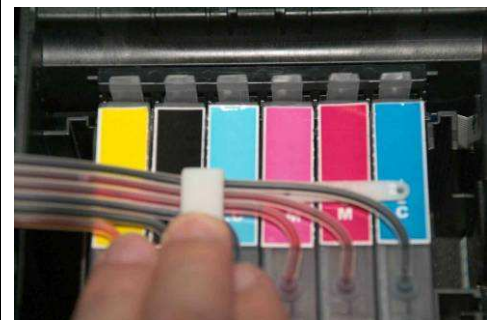
Place cartridge as shown above.



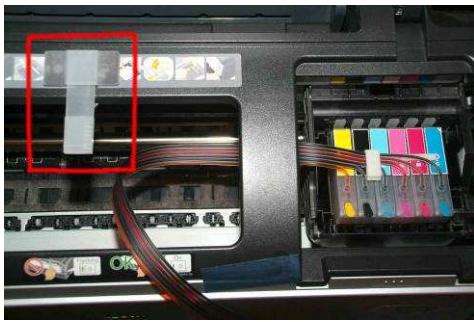
Move printhead to original position.



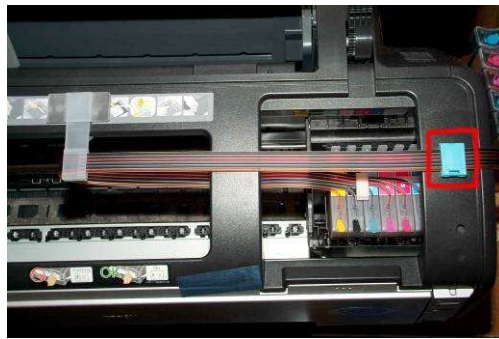
Insert the CISS cartridge the same as shown above in the picture



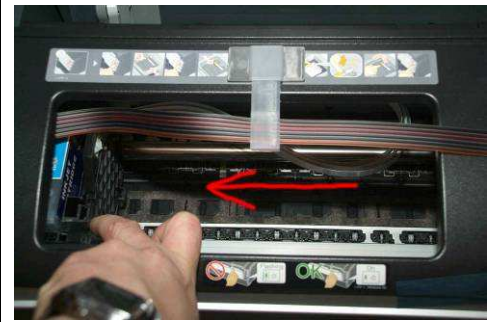
Press down firmly to make sure cartridges are in all the way



Install support arm as shown above.



Install ink line clip on the right and install ink tube as shown above.



Move the carriage to the leftmost to make sure that there is enough ink line to reach all the way to the end



Move the carriage to the rightmost to make sure that there is enough ink line to reach all the way to the end

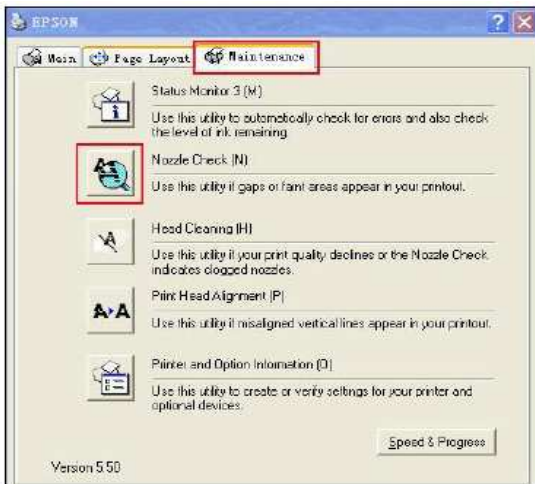


Move the cartridge car back and forth making sure the tubes will not get caught up on anything.

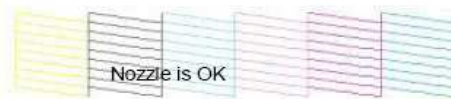
make sure there is no slack in the tube. You want to have it be just long enough to work without stretching. Any slack in the ink line will cause problems.

If printer gives you an error on the screen that cartridges are not installed remove cartridges from printhead and reinstall them back. That should fix the problem. You may have to remove and reinstall cartridges to reset ink levels.

## Check the nozzle



Enter Checking Nozzle Panel



Print test lines. If it is OK, then you can begin using.



If there is broken lines, then pls clean the printer head.

After Installation print a nozzle check.

If you have broken lines on the nozzle check run a head cleaning. Then let your printer sit 2-3 hours then run another nozzle check. If you still see broken lines then do another head cleaning and let it sit 3-4 hours, then print a nozzle check. Sometimes it takes 3-4 head cleanings. Do not run more than 3 head cleanings in a row. Let your printer sit awhile after each head cleaning. Letting the printer sit will help to clear up any printing problems.

## Chip Reset



If there is panel reminding you to change the cartridge, then please turn off the printer and re-start it after 2 minutes.

chip is reset.

## 5 Refill Ink



Please pay attention to the ink level in the reservoirs; if the ink level is below 1CM as the picture shown above, please use refill kits to fill ink into Reservoir bottles. Carefully pull out the rubber plugs from the ink refill holes (There is a possibility of ink spattering. Please be careful.) Refill ink according to the colors. Then re-cap the rubber. **(Please keep the printer and the reservoir bottles at the same level while refilling ink.)**

### Attention for Maintenance:

Take out the CISS including the inner cartridges and other components. Then remove support arm from the printer, and re-install original cartridges. Please inquire local dealer before sending to maintenance.

### Notice:

1. Try to keep at least 1/2 inch of ink in the reservoir.
2. **Please keep ink tanks on the same level as the printer. DO NOT put ink tanks above the printer or on top of the printer.**
3. Suggested using in a dry place between 15C and 35C degree. Avoid exposure to direct sunlight.
4. Don't reverse or lean the continuous ink supply systems during shipping. Please make sure all the ink filling holes and ventilation holes are closed tightly during transportation. Otherwise, the ink may leak.
5. Don't sway the cartridge frequently. It may cause ink leakage.
6. Don't pull out the connector of cartridge and don't tear off adhesive tape at the bottom of cartridge.

### Warning:

1. Not drinkable; keep it out reach of children.
2. Avoid exposure to direct sunshine and don't keep it in high or freezing temperature.